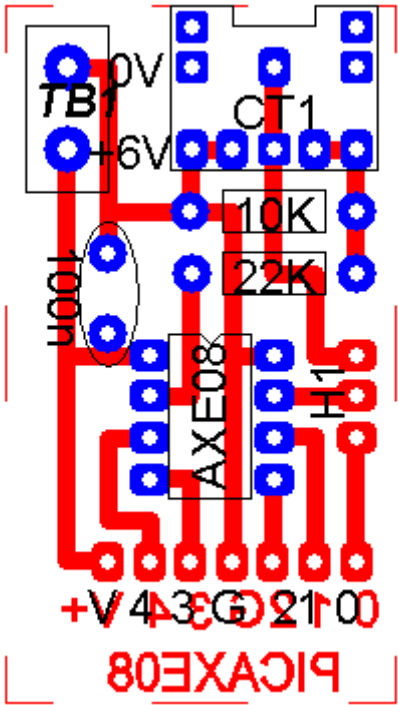


PICAXE-08 PCB



PICAXE-08 PCB

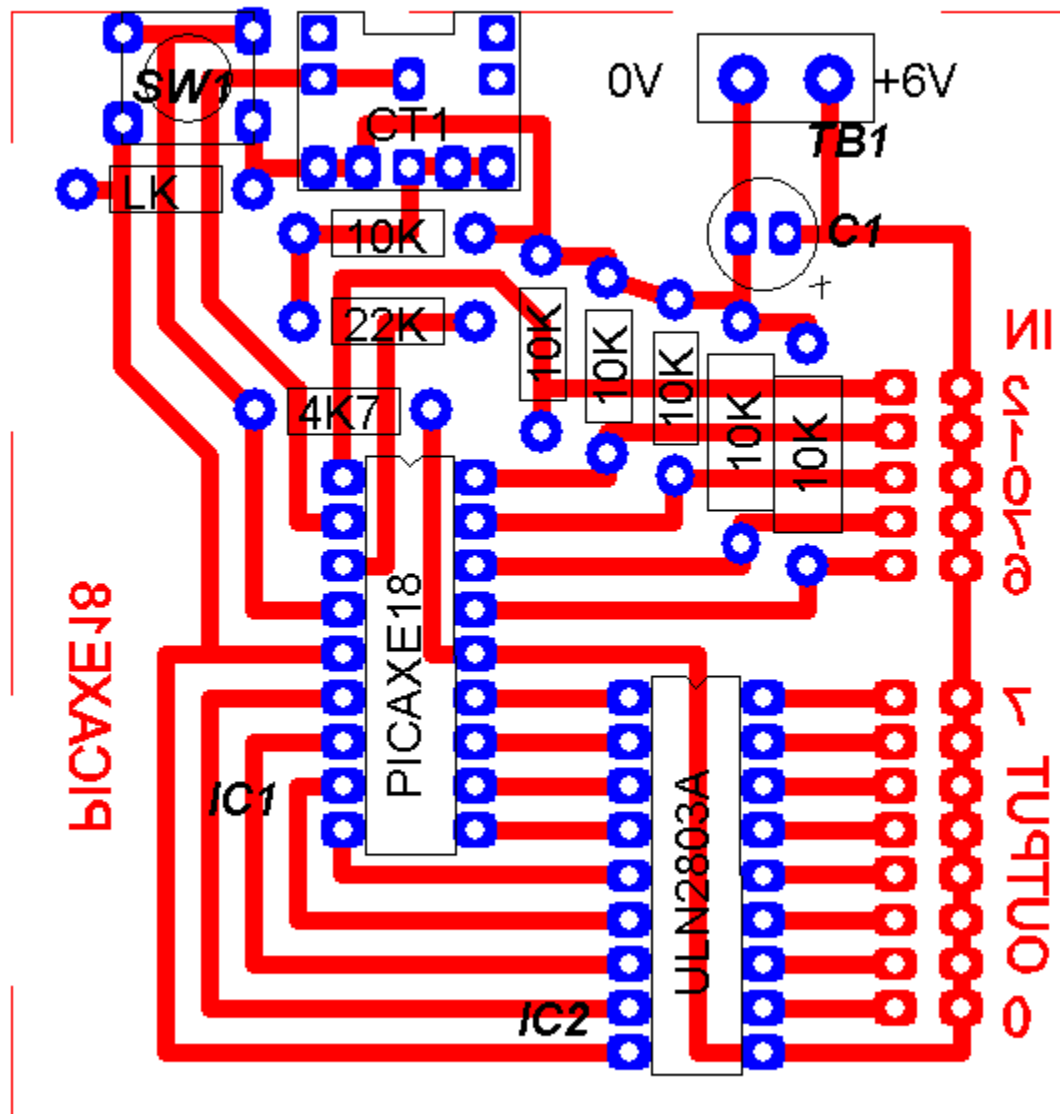
Part	Description	Order Code
CT1	3.5mm stereo socket	CON039
TB1	5mm screw terminal	CON005
TB1	PP9 battery clip	BAT016
TB1	4xAA battery box	BAT001
R1	10k 0.25W carbon film resistor	RES008
R2	22k 0.25W carbon film resistor	RES011
IC1	PICAXE08 microcontroller	AXE008
IC1	8 pin IC socket	ICH008
H1	low profile 3 pin switch	SEN030
C1	100nF polyester capacitor	CAP001

The PICAXE-08 sample PCB is designed to provide the main circuit for connecting the download cable. As the pins can be configured as inputs or outputs it is left for the user to design their own input/output interfacing circuits.

Note that a small switch is used on the PCB to switch pin 0 between the connector (required during a download) and the general purpose output connector.

This file is available as a PCB Wizard artwork file from www.picaxe.co.uk
Order codes are for parts from the online Technology store at www.tech-supplies.co.uk

PICAXE-18 PCB



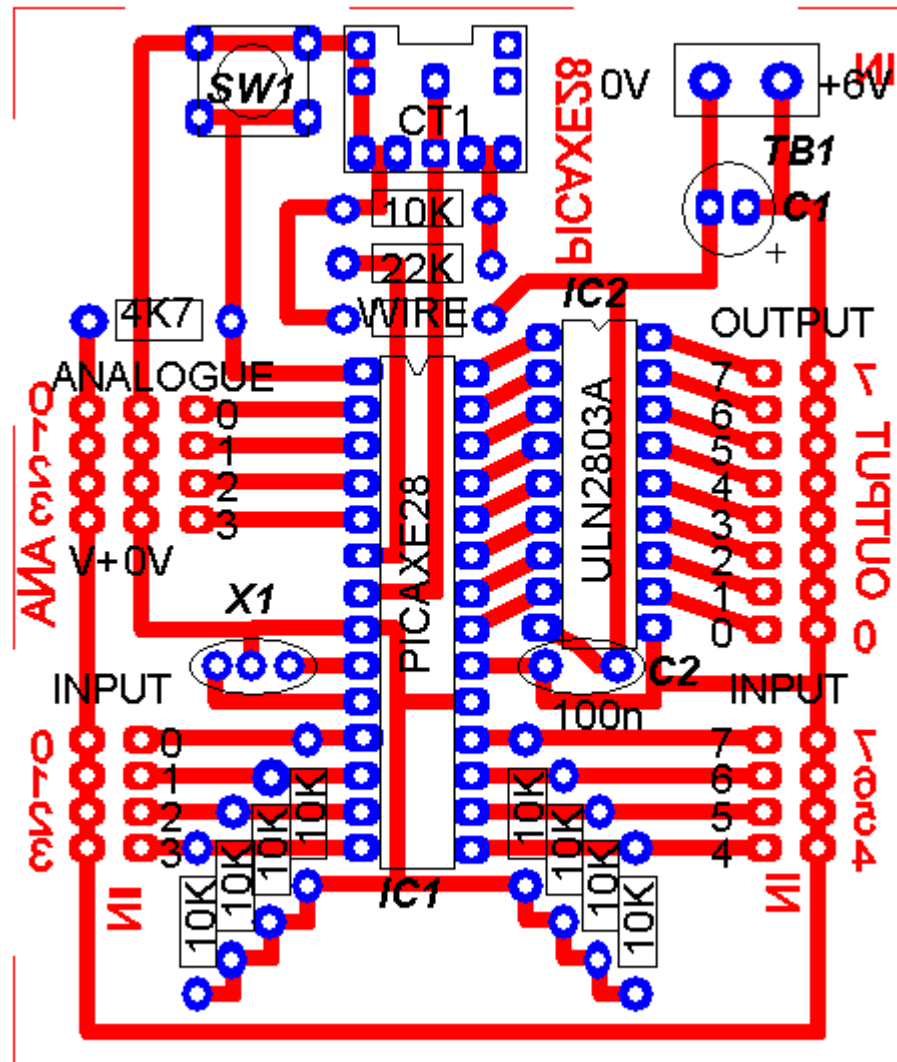
PICAXE-18 PCB

Part	Description	Order Code
CT1	3.5mm stereo socket	CON039
TB1	5mm screw terminal	CON005
TB1	PP9 battery clip	BAT016
TB1	4xAA battery box	BAT001
R1-6	10k 0.25W carbon film resistor	RES008
R7	22k 0.25W carbon film resistor	RES011
R8	4k7 0.25W carbon film resistor	RES007
IC1	PICAXE18 microcontroller	AXE015
IC1-2	18 pin IC socket	ICH018
IC2	ULN2803A darlington driver	IC050
C1	100uF electrolytic capacitor	CAP006
WIRE	wire link	RES001
S1	miniature push reset switch	SEN030

The PICAXE-18 sample PCB provides a basic circuit for the PICAXE-18 microcontroller, where all 8 outputs are buffered by a ULN2803A darlington driver chip. All 5 inputs use a 10k pull down resistor, it may be necessary to replace this resistor with an alternate value if using input 0-2 as low-resolution analogue inputs.

This file is available as a PCB Wizard artwork file from www.picaxe.co.uk
Order codes are for parts from the online Technology store at www.tech-supplies.co.uk

PICAXE-28 PCB



PICAXE-28 PCB

Part	Description	Order Code
CT1	3.5mm stereo socket	CON039
TB1	5mm screw terminal	CON005
TB1	PP9 battery clip	BAT016
TB1	4xAA battery box	BAT011
R1-6	10k 0.25W carbon film resistor	RES008
R7	22k 0.25W carbon film resistor	RES011
R8	4k7 0.25W carbon film resistor	RES007
IC1	PICAXE28 microcontroller	AXE010
IC2	ULN2803A darlington driver	IC050
IC1	28 pin (or 2x14 pin) IC socket	ICH028
IC2	18 pin IC socket	ICH018
C1	100uF electrolytic capacitor	CAP006
C2	100nF polyester capacitor	CAP001
X1	4MHz 3 pin ceramic resonator	RES035
WIRE	wire link	RES001
S1	miniature push reset switch	SEN030

The PICAXE-28 sample PCB provides a basic circuit for the PICAXE-28 microcontroller, where all 8 outputs are buffered by a ULN2803A darlington driver chip. All 8 digital inputs use a 10k pull down resistor, the analogue inputs do not have any resistors present on the board and so a full potential divider circuit must be connected.

This file is available as a PCB Wizard artwork file from www.picaxe.co.uk
Order codes are for parts from the online Technology store at www.tech-supplies.co.uk